



Certificate of Analysis

Material name:	DNA-Depleted EDTA Plasma
Part number:	60601001, 60601002, 60601003, 60601004, 60601005
Lot Number:	240636
Fill Volume	5, 50, 100, 500, 1000 ml
Source:	Defibrinated Normal Source Plasma
Storage:	2-8°C for usage within 12 months or -20 ° for long term storage. Shake well before use.
Date of manufacturing:	8/5/2024. Expiration Date: 8/31/2027

DNA Testing Results

RNaseP qPCR assay: Concentration of gDNA < 3 pg/ml

Typical Product Characteristics

Total protein: 4-7 g/dL

Immunoglobulin G: 300-1700 mg/dL

Immunoglobulin A: 70-400 mg/dL

Immunoglobulin M: 10-172 mg/dL

Cholesterol, Total: 30-199 mg/dL

Triglycerides: 30-149 mg/dL

HDL Cholesterol: > 10 mg/dL

VLDL Cholesterol: 10-40 mg/dL

LDL Cholesterol: 20-99 mg/dL


pH: 7.2-7.6

Filtered through: 0.22 um

Approval

Name:

Signature:

DocuSigned by:

A68122C2A4CC4F1...

Date: 8/5/2024

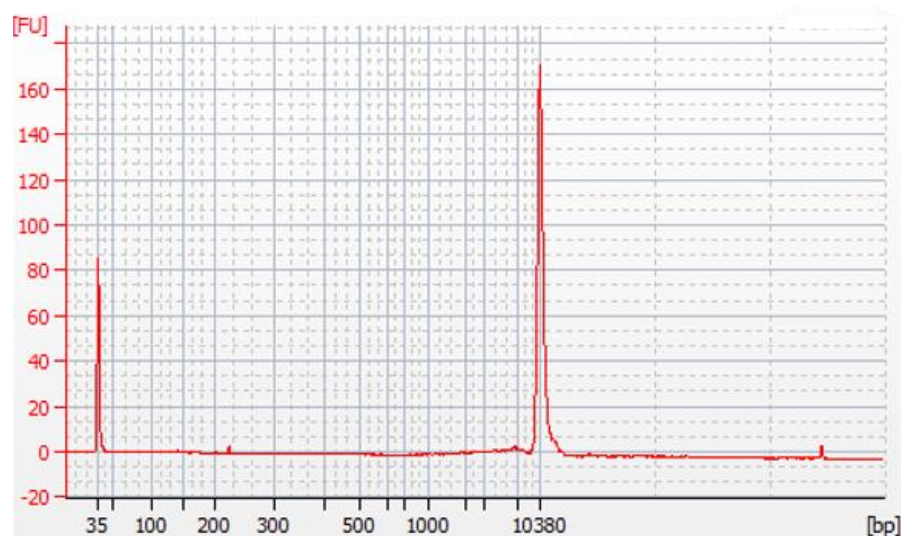
Caution

All were collected at FDA approved donor centers located in the United States. The content of this product has been tested and found negative for HBs antigen, antibodies to HIV-1/2, HCV and Syphilis. It has been tested and found non-reactive for nucleic acids of COVID-19, HIV, HBV and HCV virus. All testing performed with kits approved by the FDA. No detectable amount of DNA/RNA was found from the plasma including those for HTLV I&II and Zika. However, full safety precautions should be taken as in the handling of any potentially infectious body fluid. The product should be handled only by persons experienced in laboratory techniques.



Certificate of Analysis

Appendix: Bioanalyzer result



Note: 2.5 ml plasma was extracted with Thermo Fisher's MagMax Cell-Free DNA Isolation Kit cfDNA Extraction Kit. Extracted material was eluted in 50 ul of TE. 1 ul was loaded onto Bioanalyzer.